

Materials to Support Grade 10 Mathematics Class

MFM2P Measurement Practice Test

Name: _____

By the end of the course, students will: use the imperial and metric systems of measurement.

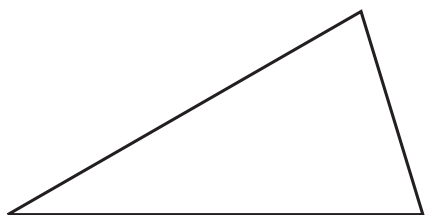
Category	Questions	R	1	2	3	4
KU	1					
	2					
	3					
A	4					
	5					
	6					
C	best					

Part 1: Knowledge

Answer each question to the best of your ability. Show enough work so that I know what you're doing.

- Convert each of the following. Show your calculations.
 - 75 inches to centimeters
 - 13 kilograms to pounds

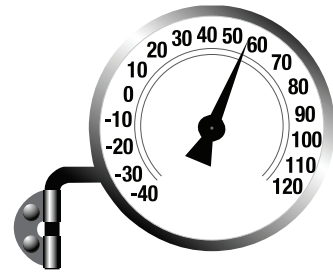
- Carefully measure the triangle and calculate its perimeter and area. Show enough work so that I know what you're doing.



Source: Created by Julia Bilenkis. Adapted with permission.

3. The picture shows an outdoor thermometer.

- a) Are the numbers around the circumference of the thermometer in Celsius or Fahrenheit degrees? Explain how you know.



- b) Convert the temperature to the other unit.

Part 2: Application



Product Specifications Corr Grain Bin		
Weight	1958.1 kg	4300 lb.
Diameter	6.37 m	20' 10 1/2"

4. Examine the product specifications above.

- a) The weight conversion is a bit off. Verify this and correct it.
 b) Check the diameter conversion. How good is it?

5. An ice hockey arena has
- 22 km of steel refrigeration pipe for the rink
 - 17 miles of yellow lines in the parking lot
 - 11,900 feet of roof truss



Compare the three measurements. Which is the largest? Be sure to show your reasoning and calculations.

Source: Created by Julia Bilenkis. Adapted with permission.

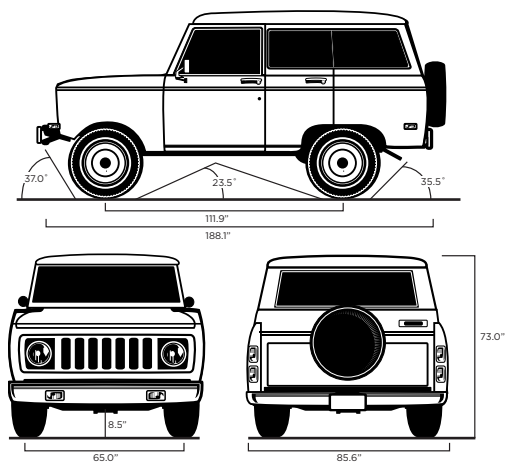
6. You have a car shelter in your yard. Will your new SUV fit in it? Be sure to support your answer with calculations and reasoning.

Dimensions of the Shelter

Width: 224 cm

Length: 369 cm

Height: 190 cm



Source: Created by Julia Bilenkis. Adapted with permission.